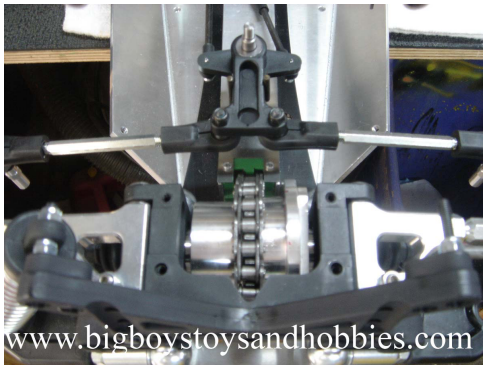


Instruction Manual FG Monster Truck 4X4 Kit



1. Remove all bodywork.



2. Remove Tires & Wheels, Rollbar etc...



3. Remove Side Plates. These will be the last thing you put on.



4. Remove Engine and Gas tank.



5. Rear Diff needs to come out. Everything else you can leave together.



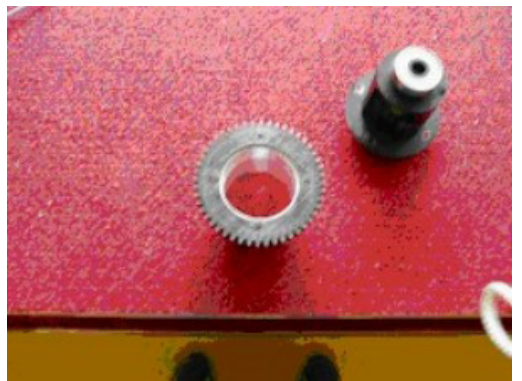
6. Take the diff apart keeping all spider gears intact.



7. Remove diff from new kit. It will come out you dont have to loosen anything.



8. Insert the chainwheel shell in to the diff. Make sure you put the gear on first then slide the diff down of the shaft. This is important b/c you cannot get it back apart once together. USE LOCK TIGHT!



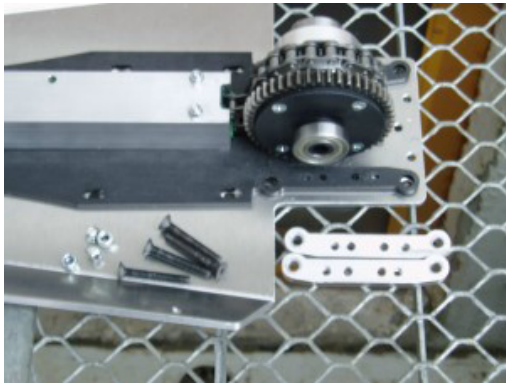
9. See how the gear goes on first then the diff slides in the housing. USE LOCK TIGHT!



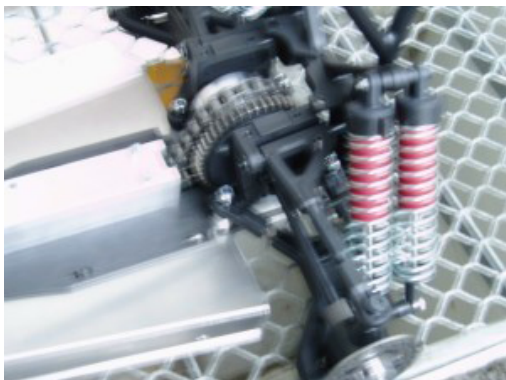
10. Ready assembled differential
****See how the gear goes on first.**



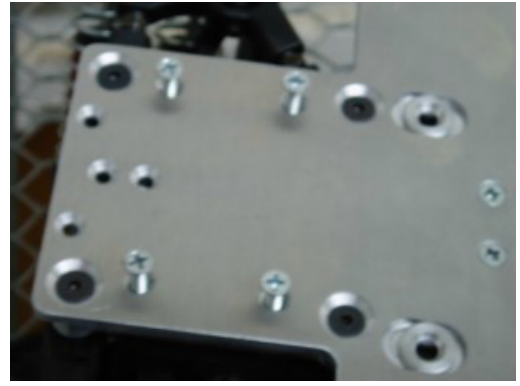
11. Hang up complete differential in the chain



12. Assemble rear axle with differential, across steering wheels screw. At this point the wheels are barley going to turn. The chain is very tight but dont worry! It will loosen up after it has been ran 5-10 minutes.



13. Differential screws getting started...



14. Ready rear axle



15. Front shock absorbers disassemble



16. Piston rod with interpiece and Plastic part with screw protection mount. The part you need is screwed into the front shock tower of the new kit. This piece makes the shock set up higher to accomidate the front drive shafts...



17. Ready shock absorbers. See the piece towards the bottom of the shock. This is important or the truck wont turn.



18. Shock absorbers insert



19. Cotakers mount and with Screw protection fasten



20. Between and Servoplatte remove



21. Bodywork holder and receiver's box mount



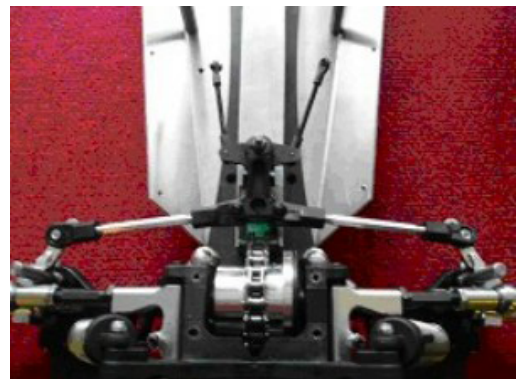
22. Original disc on new Servo-Saver-Axis lay



23. Exchange trace pole. I used the one that was already on the kit.



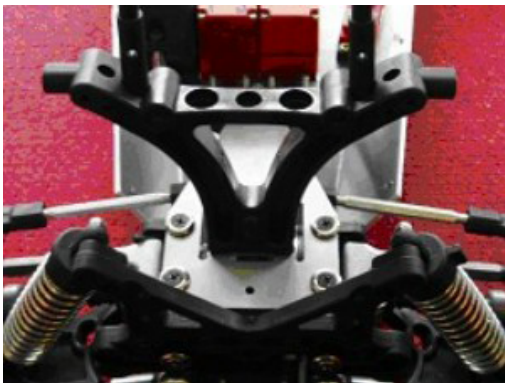
24. Complete steering system and trace pole on the inside drilling of the stub axle mount. See how the ball and socket are flipped to the other side.



25. Install servos. You will need a heavy duty Y connector to connect them.



26. Mount intersheet with bodywork holder



27. Change out the factory engine mounts with kit engine mounts



28. Insert engine. Remember that you are using the new motor mounts provided by the kit.



29. Distance holders in the rollbar mount



30. Rollbars and side parts screw on, tubes fasten



31. Off you go! Your Done!

